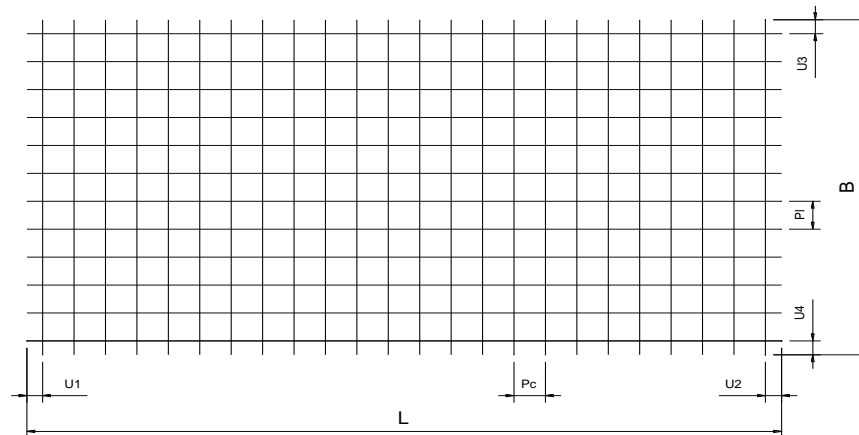




SPECIAL WELDED FABRIC

TYPE	STEEL GRADE	TYPE	∅ (mm)		DIMENSIONS (mm)		CENTERS (mm)		SHEET		BUNDLE		No. Long. bars	No. Cross bars	OVERHANGS (mm)			
			dL	dC	L	B	Pl	Pc	kg / m ²	kg / Sheet	Sheets / Bundle	kg / Bundle			u1	u2	u3	u4
			A142 M	B500A / B500B	Special	6	6	3600	2000	200	200	2,220			15,98	50	799,20	10
A193 M	B500A / B500B	Special	7	7	3600	2000	200	200	3,020	21,74	30	652,32	10	18	100	100	100	100
A252 M	B500B	Special	8	8	3600	2000	200	200	3,950	28,44	40	1137,60	10	18	100	100	100	100
A393 M	B500B	Special	10	10	3600	2000	200	200	6,160	44,35	30	1330,56	10	18	100	100	100	100
S142	B500A / B500B	Special	6	6	4800	2400	200	200	1,943	22,38	50	1118,88	10	22	200	400	400	200
S503	B500A / B500B	Special	8	8	4800	2400	100	200	4,938	56,88	20	1137,60	19	22	100	500	500	100
S252	B500B	Special	8	8	4800	2400	200	200	3,456	39,82	30	1194,48	10	22	500	100	500	100
S785	B500B	Special	10	8	4800	2400	100	200	6,695	77,13	14	1079,77	19	22	100	500	500	100
S393	B500B	Special	10	10	4800	2400	200	200	5,399	62,19	20	1243,87	10	22	500	100	500	100
S1131	B500B	Special	12	8	4800	2400	100	200	8,840	101,84	10	1018,42	19	22	100	500	500	100
E142	B500A / B500B	Special	6	6	4800	2400	200	200	2,081	23,98	50	1198,80	11	23	200	200	200	200
E385	B500A / B500B	Special	7	7	4800	2400	100	200	4,090	47,11	30	1413,36	21	23	200	200	200	200
E503	B500B	Special	8	8	4800	2400	100	200	5,349	61,62	20	1232,40	21	23	200	200	200	200
E252	B500B	Special	8	8	4800	2400	200	200	3,703	42,66	30	1279,80	11	23	200	200	200	200
E785	B500B	Special	10	8	4800	2400	100	200	7,291	84,00	14	1175,97	21	23	200	200	200	200
E393	B500B	Special	10	10	4800	2400	200	200	5,784	66,64	20	1332,72	11	23	200	200	200	200
E1131	B500B	Special	12	8	4800	2400	100	200	9,663	111,31	10	1113,14	21	23	200	200	200	200





MESH MANUFACTURING LAYOUT

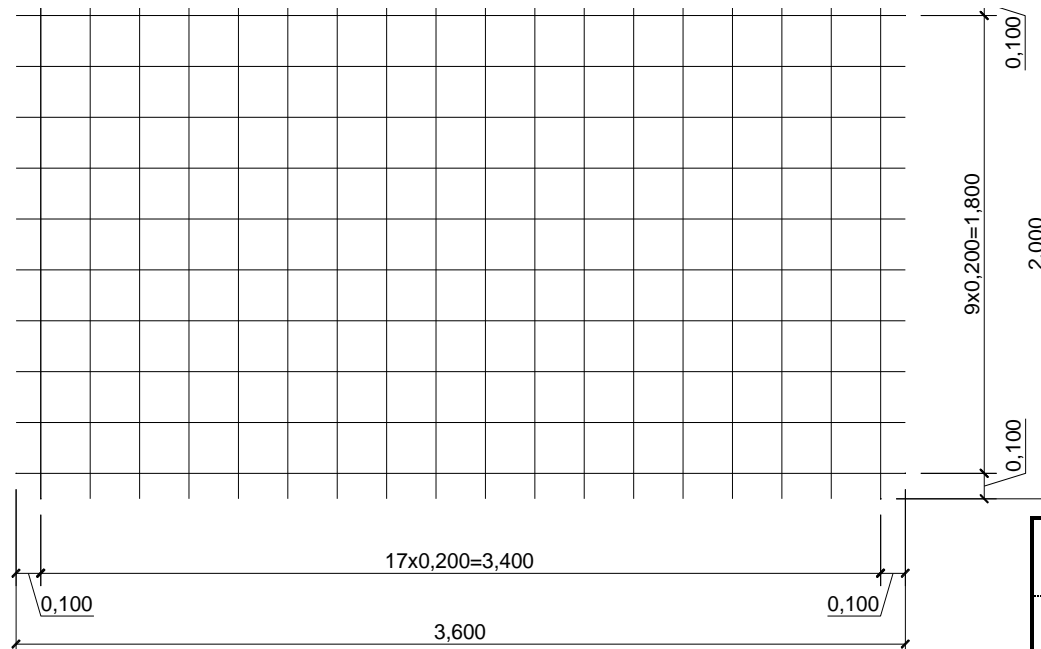
BS 4483:2005 TYPE A142 M

CODIGO:

82200606C1

STUDY No.: 0 1900
CONTRACT No.: S/N REV: 1
CUSTOMER: 0
CONSTRUCTION PROJECT: 0

ORDEN FABR.Nº: NULO FECHA: NULO



TOTAL JOINTS:

180

Max. No. broken welds: (2%) Sheet

3

(20%) Bar

3

No. OF MAIN BARS: 10 Ø 6 Length = 3600 mm

No. OF CROSS BARS: 18 Ø 6 Length = 2000 mm

SHEET WEIGHT: 15,984

WEIGHT PER M2: 2,220

M2 / SHEET: 7,200

BUNDLE WEIGHT: 799,200

Nº OF SHEETS TO PRODUCE:

0

No. OF SHEETS PER BUNDLE:

50

MATERIAL QUALITY:

B500B



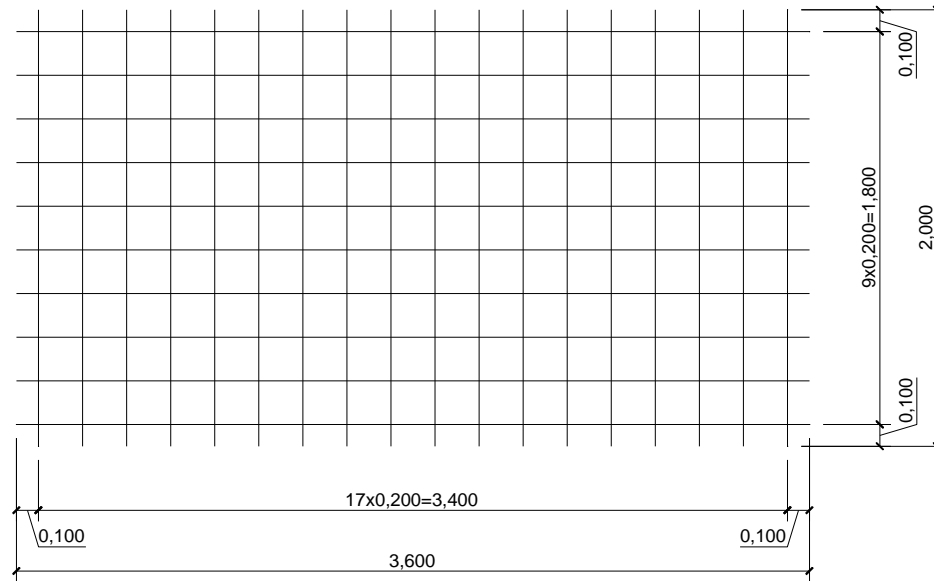
MESH MANUFACTURING LAYOUT

BS 4483:2005 TYPE A193 M

CODIGO: **62200707C3**

STUDY No.: 0 1900
CONTRACT No.: S/N REV: 1
CUSTOMER: 0
CONSTRUCTION PROJECT: 0

ORDEN FABR.Nº: NULO FECHA: NULO



TOTAL JOINTS: **180**

Max. No. broken welds: (2%) Sheet **3**

(20%) Bar **3**

No. OF MAIN BARS: **10 Ø 7 Length = 3600 mm**

No. OF CROSS BARS: **18 Ø 7 Length = 2000 mm**

SHEET WEIGHT: **21,744**

WEIGHT PER M2: **3,020**

M2 / SHEET: **7,200**

BUNDLE WEIGHT: **652,320**

Nº OF SHEETS TO PRODUCE: **0**

No. OF SHEETS PER BUNDLE: **30**

MATERIAL QUALITY: **B500A**



MESH MANUFACTURING LAYOUT

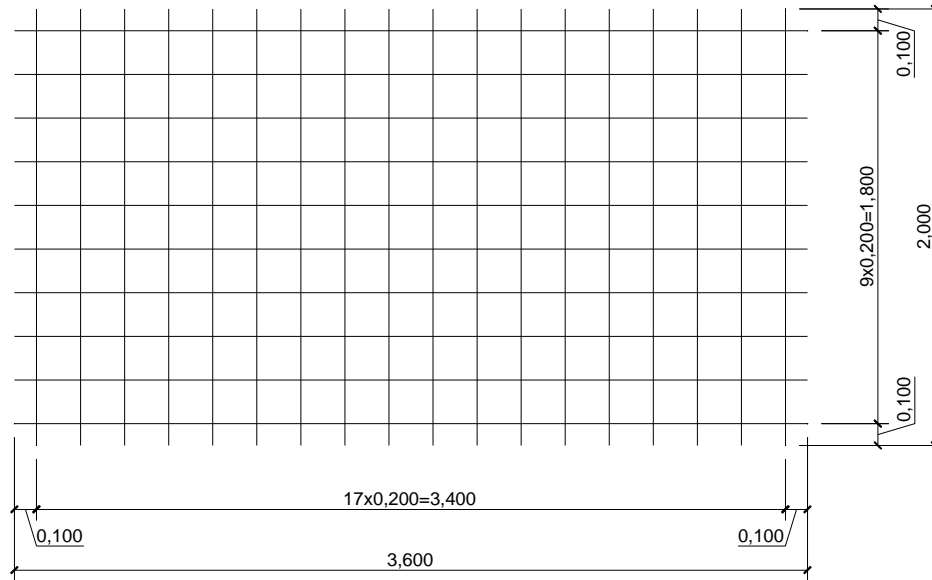
BS 4483:2005 TYPE A252 M

CODIGO:

82200808C1

STUDY No.: 0 1900
CONTRACT No.: S/N REV: 1
CUSTOMER: 0
CONSTRUCTION PROJECT: 0

ORDEN FABR.Nº: NULO FECHA: NULO



TOTAL JOINTS:

180

Max. No. broken welds: (2%) Sheet

3

(20%) Bar

3

No. OF MAIN BARS: 10 Ø 8 Length = 3600 mm

SHEET WEIGHT: 28,440

No. OF CROSS BARS: 18 Ø 8 Length = 2000 mm

WEIGHT PER M2: 3,950

M2 / SHEET: 7,200

BUNDLE WEIGHT: 1137,600

Nº OF SHEETS TO PRODUCE:

0

No. OF SHEETS PER BUNDLE:

40

MATERIAL QUALITY:

B500B



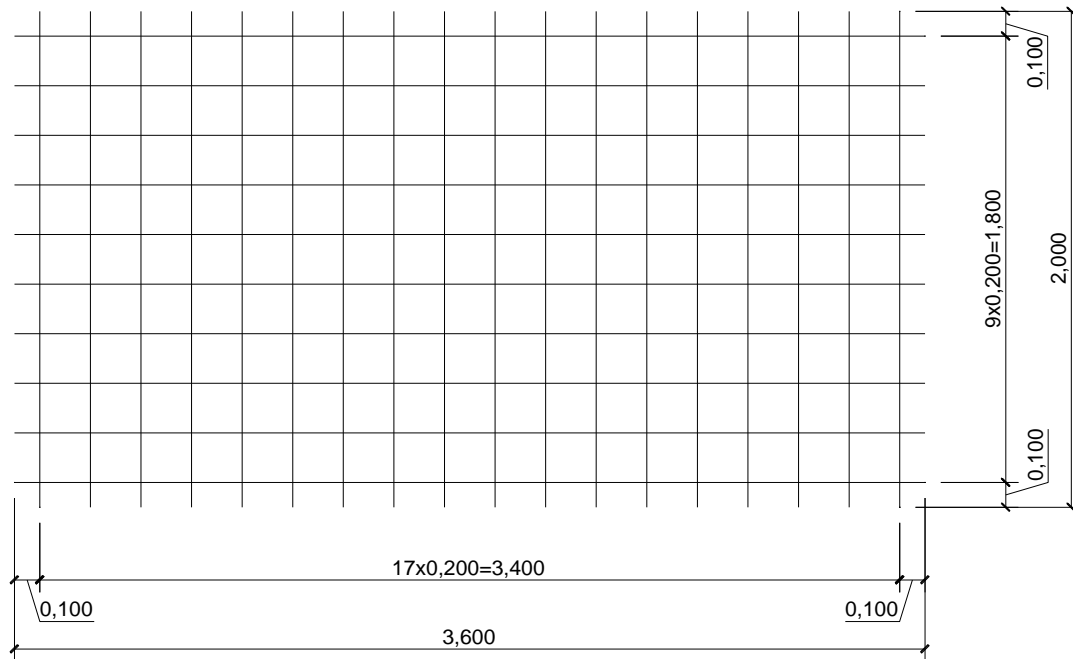
MESH MANUFACTURING LAYOUT

BS 4483:2005 TYPE A393 M

CODIGO: **82201010C1**

STUDY No.: 0 1900
CONTRACT No.: S/N REV: 1
CUSTOMER: 0
CONSTRUCTION PROJECT: 0

ORDEN FABR.Nº: NULO FECHA: NULO



TOTAL JOINTS: **180**

Max. No. broken welds: (2%) Sheet **3**

(20%) Bar **3**

No. OF MAIN BARS: **10 Ø 10 Length = 3600 mm**

No. OF CROSS BARS: **18 Ø 10 Length = 2000 mm**

SHEET WEIGHT: **44,352**

WEIGHT PER M2: **6,160**

M2 / SHEET: **7,200**

BUNDLE WEIGHT: **1330,560**

Nº OF SHEETS TO PRODUCE: **0**

No. OF SHEETS PER BUNDLE: **30**

MATERIAL QUALITY: **B500B**



MESH MANUFACTURING LAYOUT

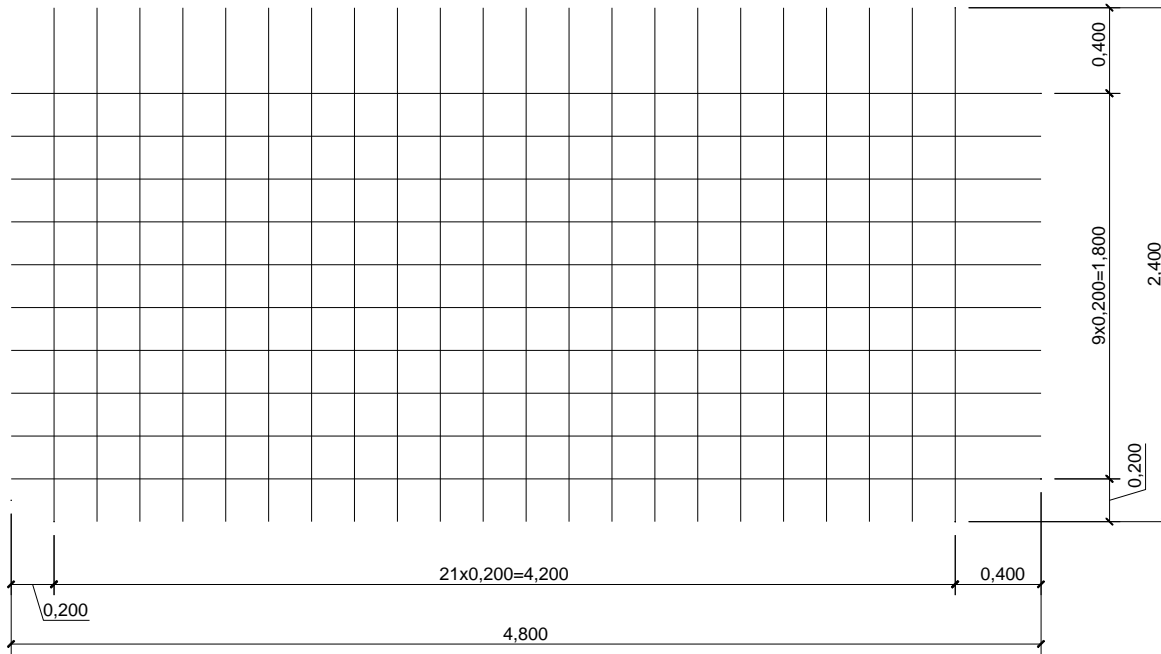
BS 4483:2005 TYPE S142

CODIGO:

82200606C2

STUDY No.: 0 1900
CONTRACT No.: S/N REV: 1
CUSTOMER: 0
CONSTRUCTION PROJECT: 0

ORDEN FABR.Nº: NULO FECHA: NULO



TOTAL JOINTS:

220

Max. No. broken welds: (2%) Sheet

4

(20%) Bar

4

No. OF MAIN BARS: 10 Ø 6 Length = 4800 mm

SHEET WEIGHT: 22,378

No. OF CROSS BARS: 22 Ø 6 Length = 2400 mm

WEIGHT PER M2: 1,943

M2 / SHEET: 11,520

BUNDLE WEIGHT: 1118,880

Nº OF SHEETS TO PRODUCE:

0

No. OF SHEETS PER BUNDLE:

50

MATERIAL QUALITY:

B500B



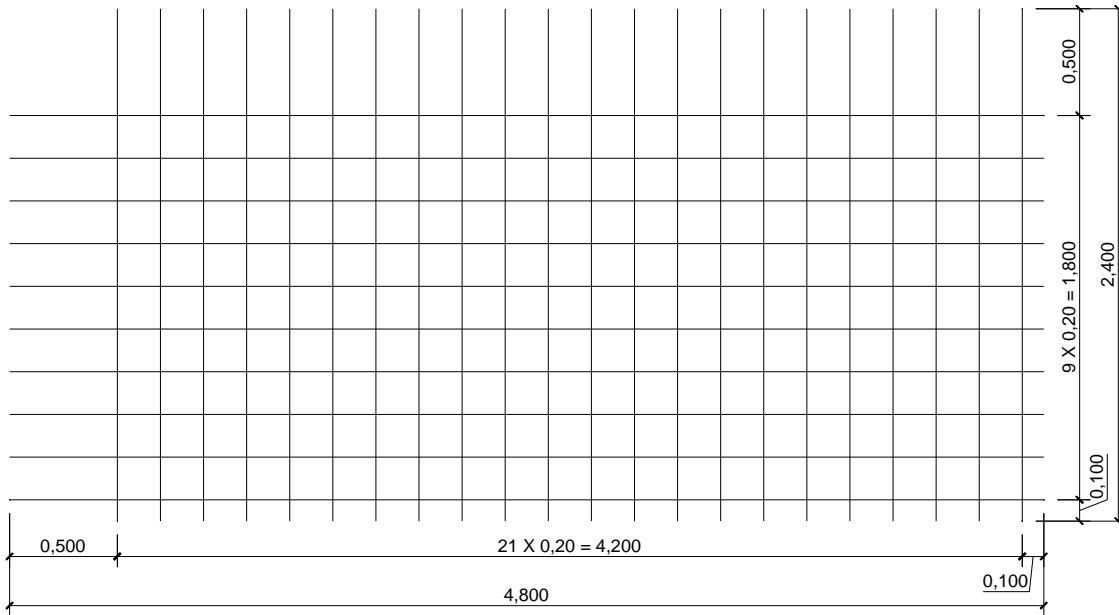
MESH MANUFACTURING LAYOUT

BS 4483:2005 TYPE S252

CODIGO: **82200808C2**

STUDY No.: 0 1900
CONTRACT No.: S/N REV: 1
CUSTOMER: 0
CONSTRUCTION PROJECT: 0

ORDEN FABR.Nº: NULO FECHA: NULO



TOTAL JOINTS: **220**

Max. No. broken welds: (2%) Sheet **4**

(20%) Bar **4**

No. OF MAIN BARS: **10 Ø 8 Length = 4800 mm**

No. OF CROSS BARS: **22 Ø 8 Length = 2400 mm**

SHEET WEIGHT: **39,816**

WEIGHT PER M2: **3,456**

M2 / SHEET: **11,520**

BUNDLE WEIGHT: **1194,480**

Nº OF SHEETS TO PRODUCE: **0**

No. OF SHEETS PER BUNDLE: **30**

MATERIAL QUALITY: **B500B**



MESH MANUFACTURING LAYOUT

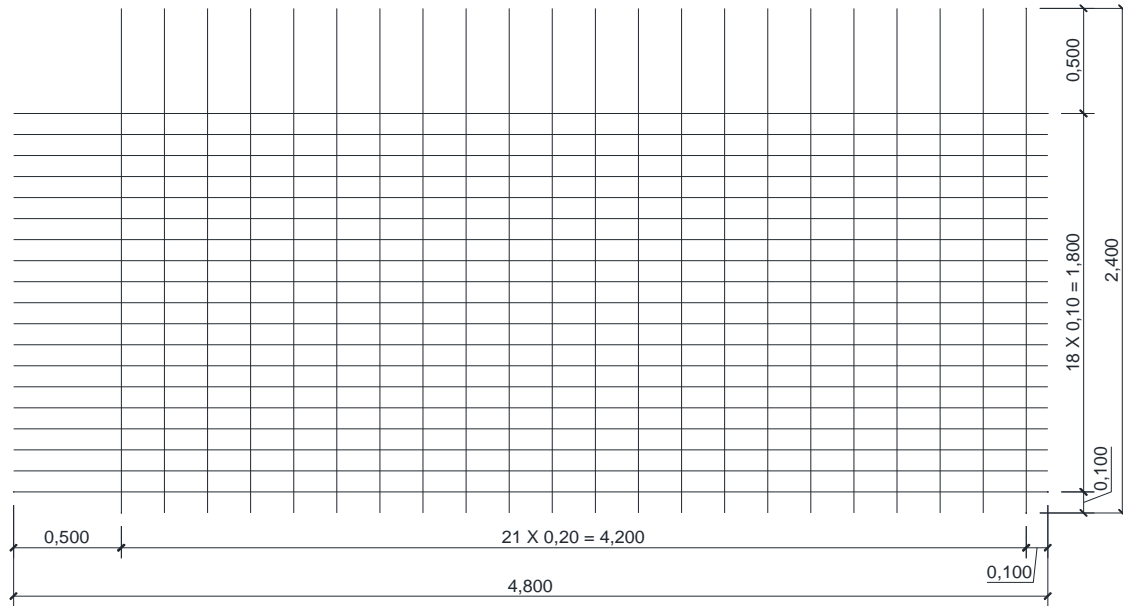
BS 4483:2005 TYPE S503

CODIGO:

82100808C3

STUDY No.: 0 1900
CONTRACT No.: S/N REV: 1
CUSTOMER: 0
CONSTRUCTION PROJECT: 0

ORDEN FABR.Nº: NULO FECHA: NULO



TOTAL JOINTS:

418

Max. No. broken welds: (2%) Sheet

8

(20%) Bar

4

No. OF MAIN BARS: 19 Ø 8 Length = 4800 mm

No. OF CROSS BARS: 22 Ø 8 Length = 2400 mm

SHEET WEIGHT: 56,880

WEIGHT PER M2: 4,938

M2 / SHEET: 11,520

BUNDLE WEIGHT: 1137,600

Nº OF SHEETS TO PRODUCE:

0

No. OF SHEETS PER BUNDLE:

20

MATERIAL QUALITY:

B500B



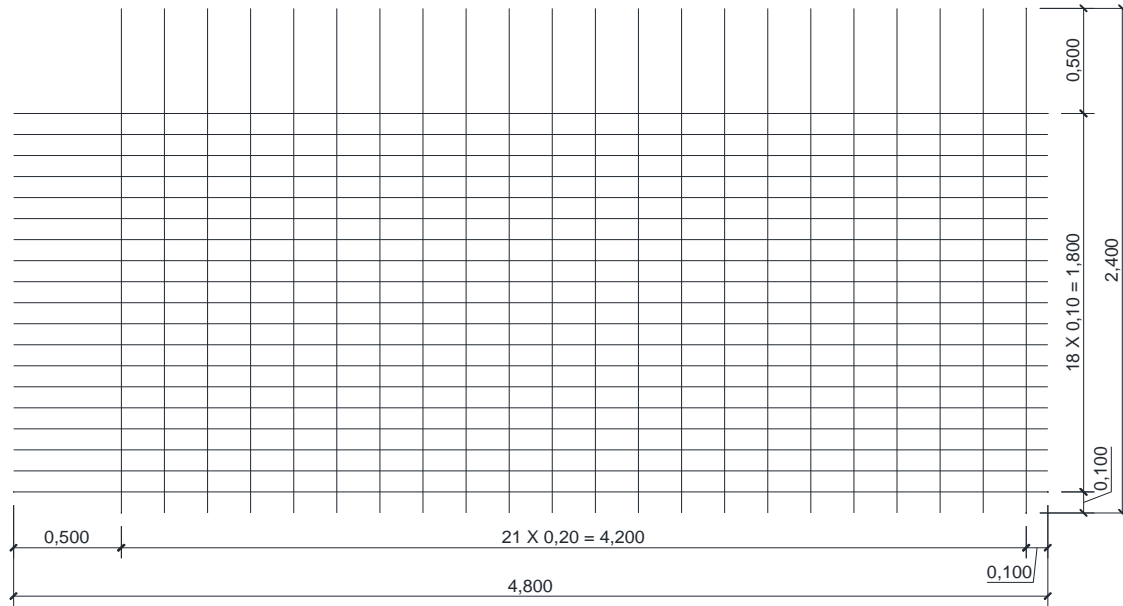
MESH MANUFACTURING LAYOUT

BS 4483:2005 TYPE S785

CODIGO: **82101008C3**

STUDY No.: 0 1900
CONTRACT No.: S/N REV: 1
CUSTOMER: 0
CONSTRUCTION PROJECT: 0

ORDEN FABR.Nº: NULO FECHA: NULO



TOTAL JOINTS: **418**

Max. No. broken welds: (2%) Sheet **8**

(20%) Bar **4**

No. OF MAIN BARS: **19 Ø 10 Length = 4800 mm**

No. OF CROSS BARS: **22 Ø 8 Length = 2400 mm**

SHEET WEIGHT: **77,126**

WEIGHT PER M2: **6,695**

M2 / SHEET: **11,520**

BUNDLE WEIGHT: **1079,770**

Nº OF SHEETS TO PRODUCE: **0**

No. OF SHEETS PER BUNDLE: **14**

MATERIAL QUALITY: **B500B**



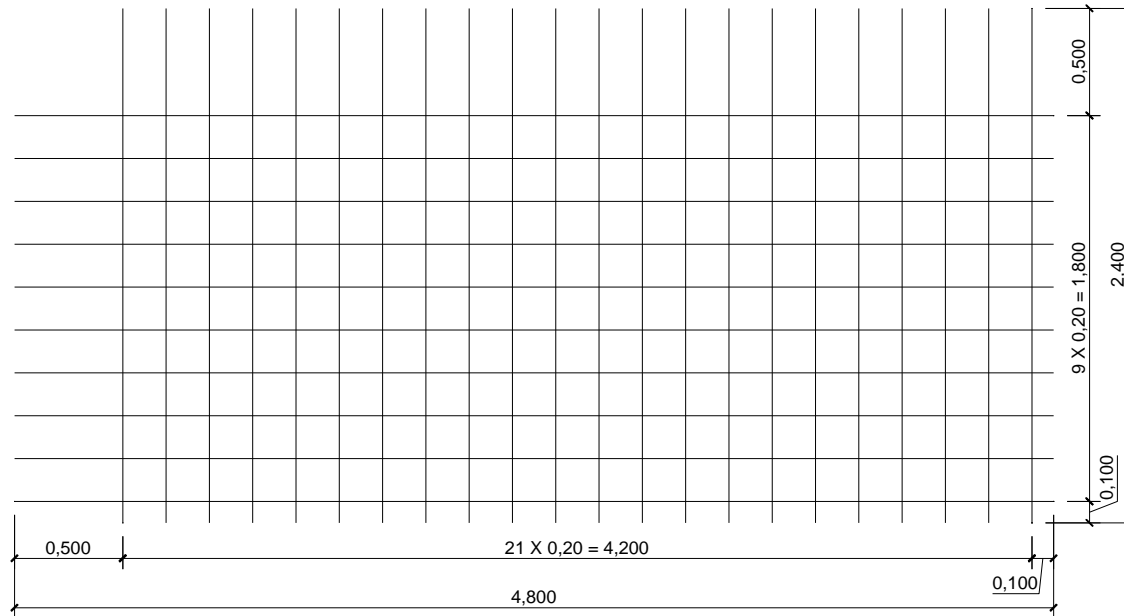
MESH MANUFACTURING LAYOUT

BS 4483:2005 TYPE S393

CODIGO: 82201010C2

STUDY No.: 0 1900
CONTRACT No.: S/N REV: 1
CUSTOMER: 0
CONSTRUCTION PROJECT: 0

ORDEN FABR.Nº: NULO FECHA: NULO



TOTAL JOINTS: 220

Max. No. broken welds: (2%) Sheet 4

(20%) Bar 4

No. OF MAIN BARS: 10 Ø 10 Length = 4800 mm

No. OF CROSS BARS: 22 Ø 10 Length = 2400 mm

SHEET WEIGHT: 62,194

WEIGHT PER M2: 5,399

M2 / SHEET: 11,520

BUNDLE WEIGHT: 1243,872

Nº OF SHEETS TO PRODUCE: 0

No. OF SHEETS PER BUNDLE: 20

MATERIAL QUALITY: B500B



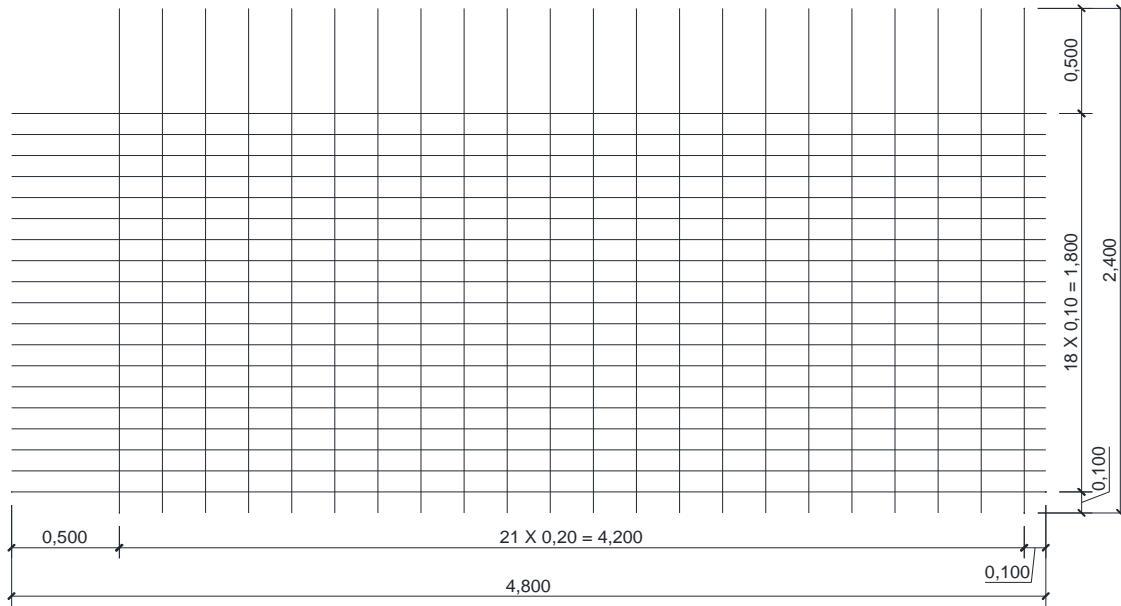
MESH MANUFACTURING LAYOUT

BS 4483:2005 TYPE S1131

CODIGO: **82101208C3**

STUDY No.: 0 1900
CONTRACT No.: S/N REV: 1
CUSTOMER: 0
CONSTRUCTION PROJECT: 0

ORDEN FABR.Nº: NULO FECHA: NULO



TOTAL JOINTS: **418**

Max. No. broken welds: (2%) Sheet **8**

(20%) Bar **4**

No. OF MAIN BARS: **19 Ø 12 Length = 4800 mm**

No. OF CROSS BARS: **22 Ø 8 Length = 2400 mm**

SHEET WEIGHT: **101,842**

WEIGHT PER M2: **8,840**

M2 / SHEET: **11,520**

BUNDLE WEIGHT: **1018,416**

Nº OF SHEETS TO PRODUCE: **0**

No. OF SHEETS PER BUNDLE: **10**

MATERIAL QUALITY: **B500B**



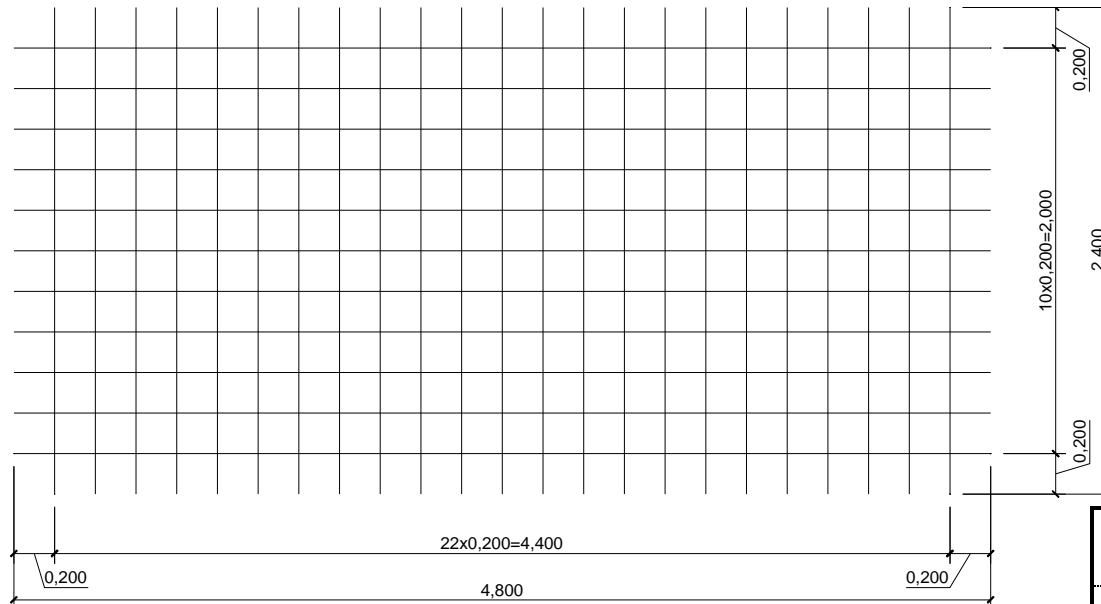
MESH MANUFACTURING LAYOUT

BS 4483:2005 TYPE E252

CODIGO: **82200808C3**

STUDY No.: 0 1900
CONTRACT No.: S/N REV: 1
CUSTOMER: 0
CONSTRUCTION PROJECT: 0

ORDEN FABR.Nº: NULO FECHA: NULO



TOTAL JOINTS: **253**

Max. No. broken welds: (2%) Sheet **5**

(20%) Bar **4**

No. OF MAIN BARS: **11 Ø 8 Length = 4800 mm**

No. OF CROSS BARS: **23 Ø 8 Length = 2400 mm**

SHEET WEIGHT: **42,660**

WEIGHT PER M2: **3,703**

M2 / SHEET: **11,520**

BUNDLE WEIGHT: **1279,800**

Nº OF SHEETS TO PRODUCE: **0**

No. OF SHEETS PER BUNDLE: **30**

MATERIAL QUALITY: **B500B**



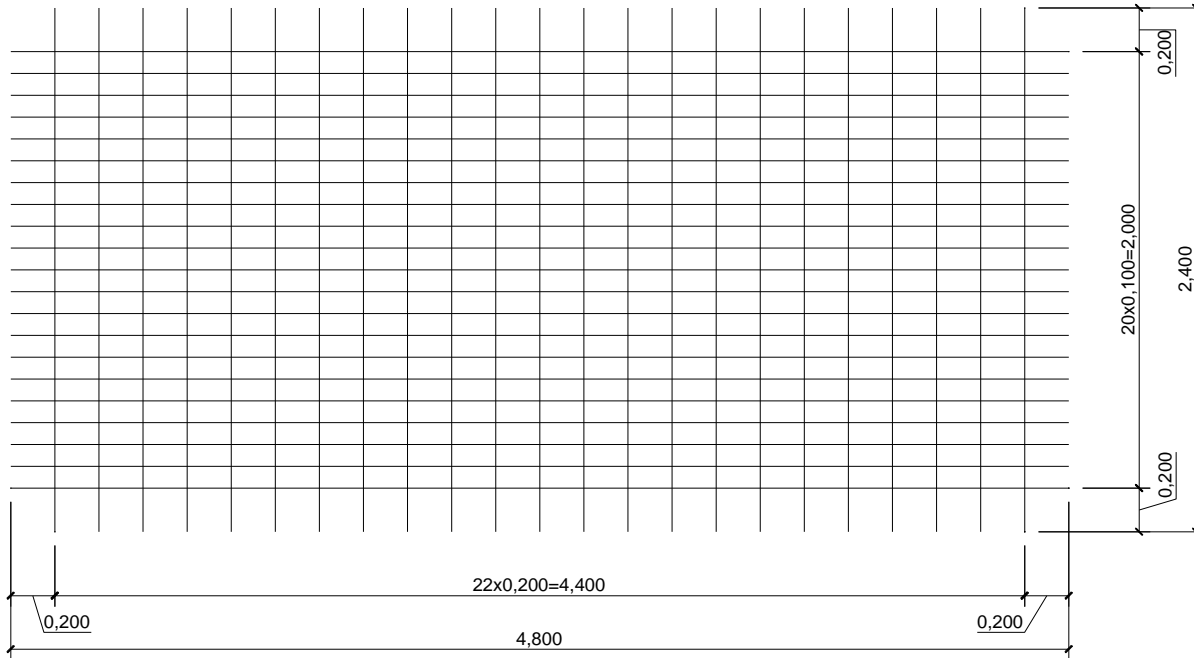
MESH MANUFACTURING LAYOUT

BS 4483:2005 TYPE E503

CODIGO: **82100808C1**

STUDY No.: 0 1900
CONTRACT No.: S/N REV: 1
CUSTOMER: 0
CONSTRUCTION PROJECT: 0

ORDEN FABR.Nº: NULO FECHA: NULO



TOTAL JOINTS:

483

Max. No. broken welds: (2%) Sheet

9

(20%) Bar

4

No. OF MAIN BARS: **21 Ø 8 Length = 4800 mm**

SHEET WEIGHT: **61,620**

No. OF CROSS BARS: **23 Ø 8 Length = 2400 mm**

WEIGHT PER M2: **5,349**

M2 / SHEET: **11,520**

BUNDLE WEIGHT: **1232,400**

Nº OF SHEETS TO PRODUCE:

0

No. OF SHEETS PER BUNDLE:

20

MATERIAL QUALITY:

B500B



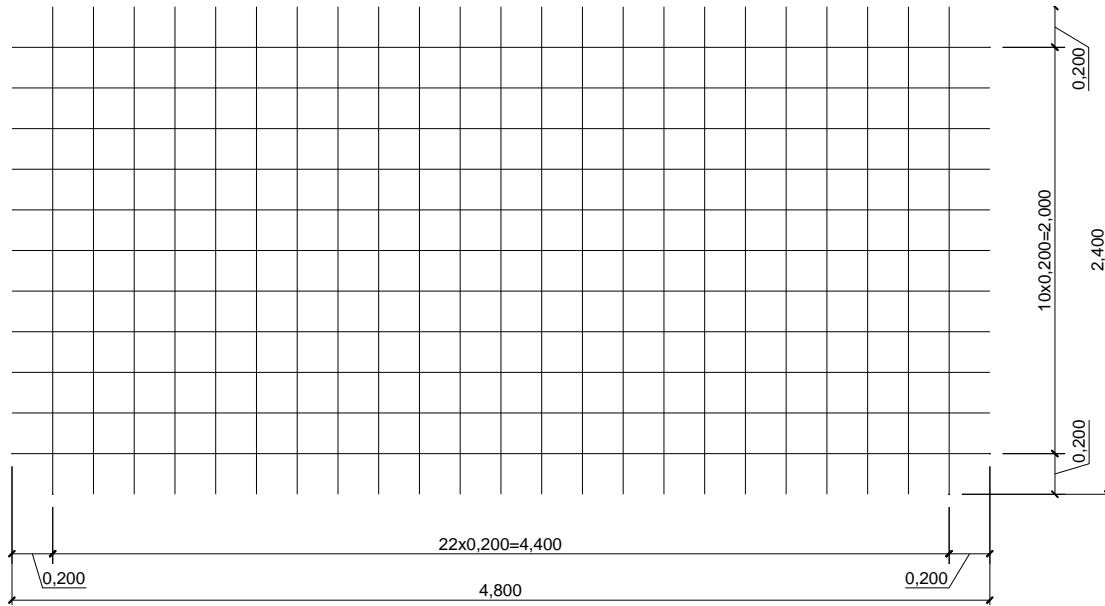
MESH MANUFACTURING LAYOUT

BS 4483:2005 TYPE E393

CODIGO: **82201010C3**

STUDY No.: 0 1900
CONTRACT No.: S/N REV: 1
CUSTOMER: 0
CONSTRUCTION PROJECT: 0

ORDEN FABR.Nº: NULO FECHA: NULO



TOTAL JOINTS:

253

Max. No. broken welds: (2%) Sheet

5

(20%) Bar

4

No. OF MAIN BARS: **11 Ø 10 Length = 4800 mm**

SHEET WEIGHT: **66,636**

No. OF CROSS BARS: **23 Ø 10 Length = 2400 mm**

WEIGHT PER M2: **5,784**

M2 / SHEET: **11,520**

BUNDLE WEIGHT: **1332,720**

Nº OF SHEETS TO PRODUCE:

0

No. OF SHEETS PER BUNDLE:

20

MATERIAL QUALITY:

B500B



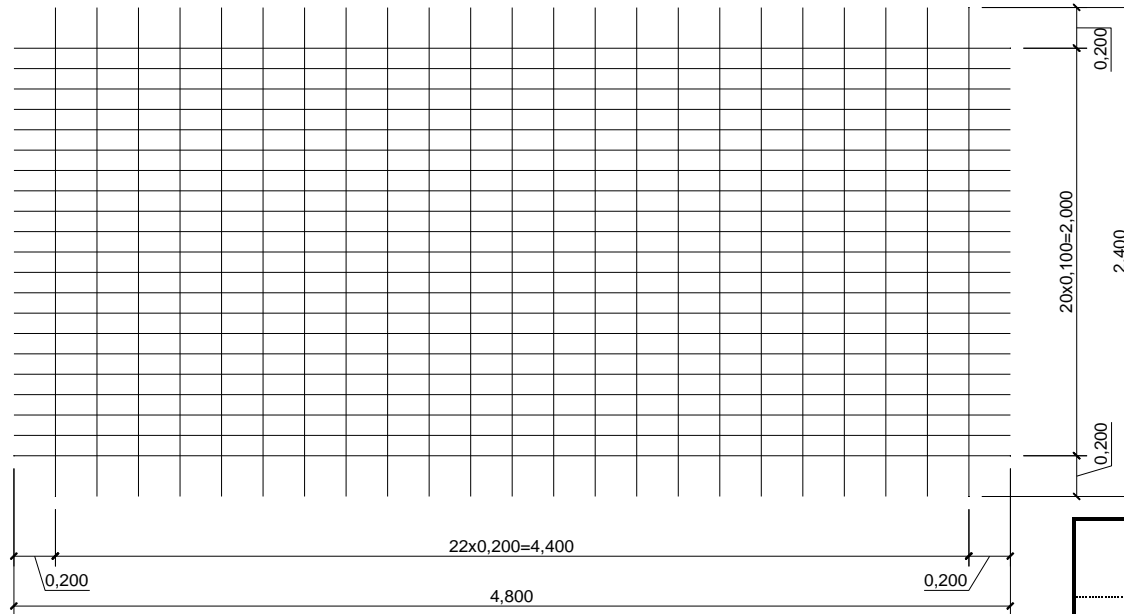
MESH MANUFACTURING LAYOUT

BS 4483:2005 TYPE E785

CODIGO: **82101008C1**

STUDY No.: 0 1900
CONTRACT No.: S/N REV: 1
CUSTOMER: 0
CONSTRUCTION PROJECT: 0

ORDEN FABR.Nº: NULO FECHA: NULO



TOTAL JOINTS:	483
Max. No. broken welds: (2%) Sheet	9
(20%) Bar	4

No. OF MAIN BARS: **21 Ø 10 Length = 4800 mm**

No. OF CROSS BARS: **23 Ø 8 Length = 2400 mm**

SHEET WEIGHT: **83,998**

WEIGHT PER M2: **7,291**

M2 / SHEET: **11,520**

BUNDLE WEIGHT: **1175,966**

Nº OF SHEETS TO PRODUCE: **0**

No. OF SHEETS PER BUNDLE: **14**

MATERIAL QUALITY: **B500B**



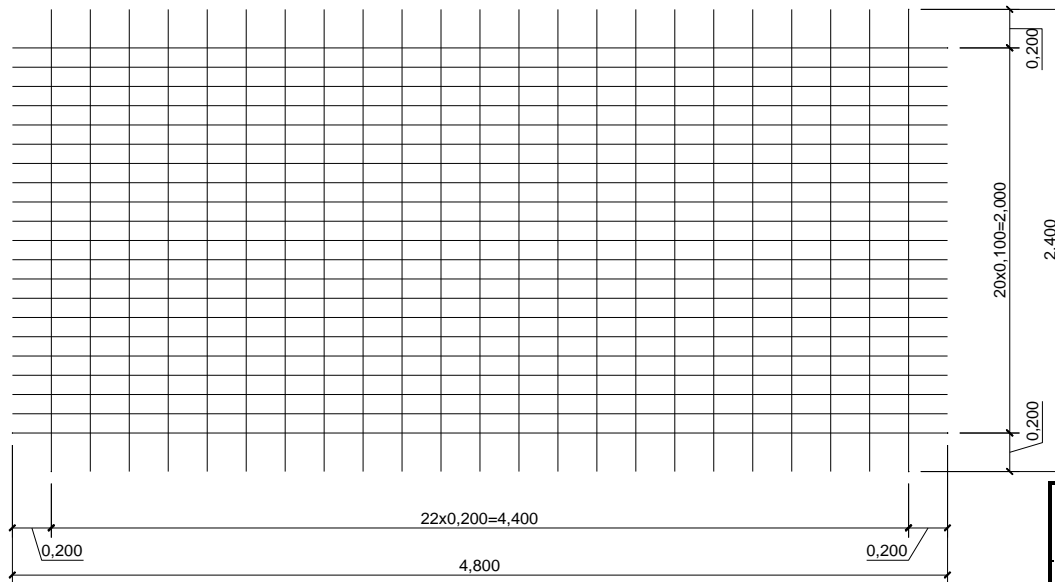
MESH MANUFACTURING LAYOUT

BS 4483:2005 TYPE E1131

CODIGO: **82101208C1**

STUDY No.: 0 1900
CONTRACT No.: S/N REV: 1
CUSTOMER: 0
CONSTRUCTION PROJECT: 0

ORDEN FABR.Nº: NULO FECHA: NULO



TOTAL JOINTS: **483**

Max. No. broken welds: (2%) Sheet **9**

(20%) Bar **4**

No. OF MAIN BARS: **21 Ø 12 Length = 4800 mm**

No. OF CROSS BARS: **23 Ø 8 Length = 2400 mm**

SHEET WEIGHT: **111,314**

WEIGHT PER M2: **9,663**

M2 / SHEET: **11,520**

BUNDLE WEIGHT: **1113,144**

Nº OF SHEETS TO PRODUCE: **0**

No. OF SHEETS PER BUNDLE: **10**

MATERIAL QUALITY: **B500B**